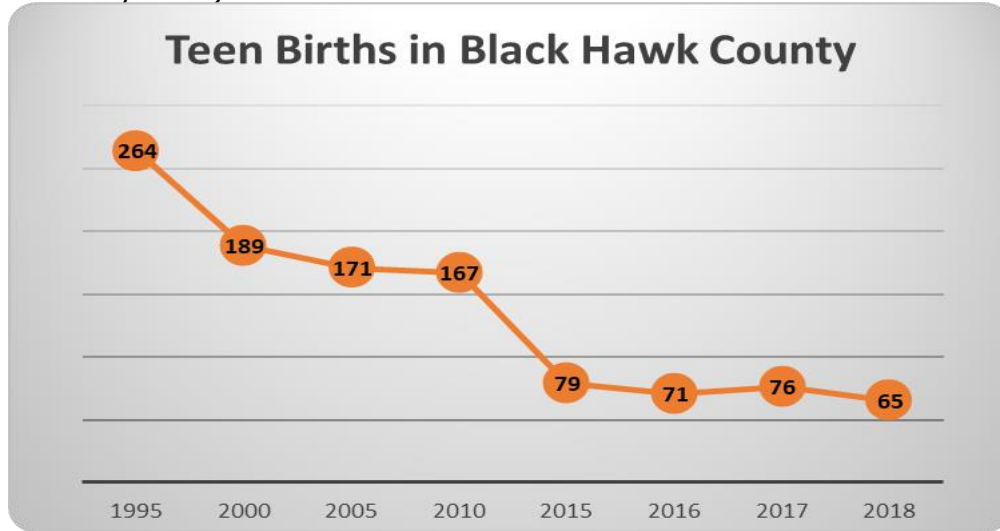
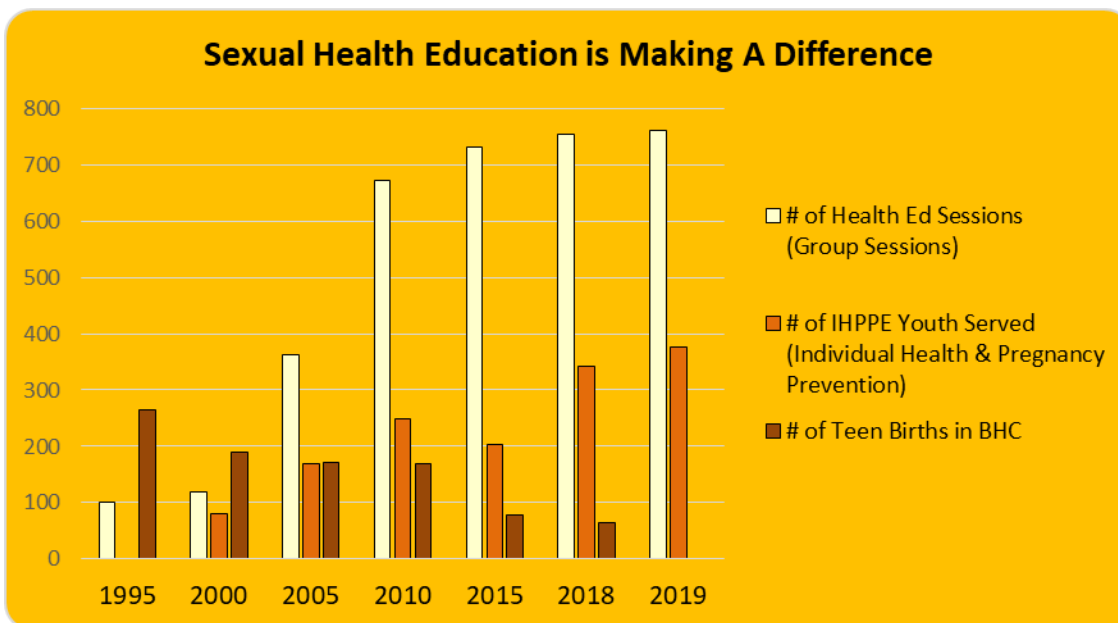


Adolescent Sexual Health Trends in Black Hawk County

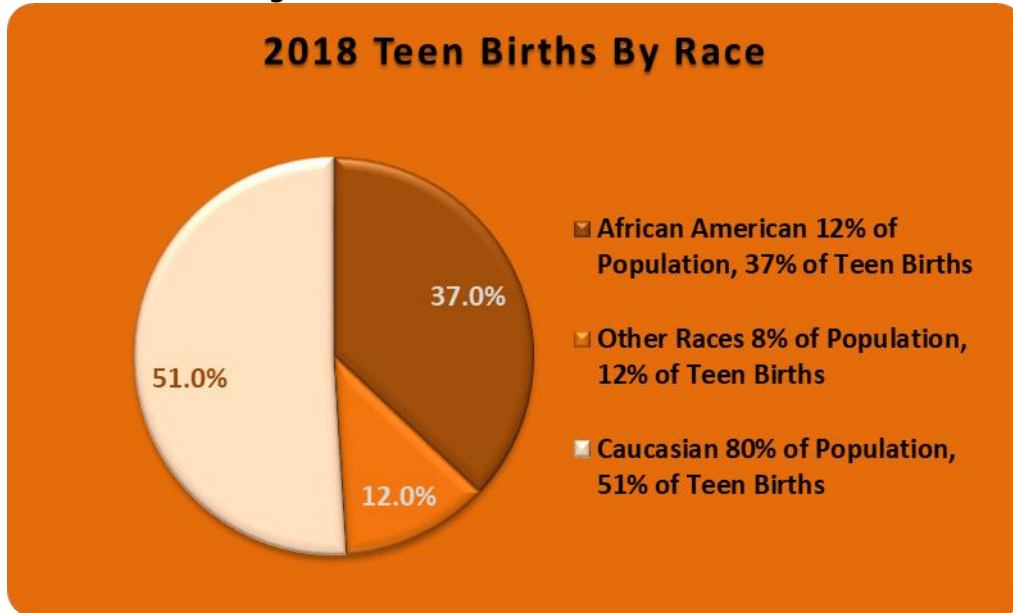
The continuum of programming Together For Youth (TFY) has developed in partnership with many community agencies has had a direct impact on Black Hawk County's current low teen birth rate. Historically our county had one of the highest rates of teen births in the state. In 1995, 264 teens gave birth (which is a rate of 47.3 for every 1,000 teen girls). In 2018, 65 teens gave birth (which is a rate of 13.5 for every 1,000 teen girls). This equates to a decline of 75% in teen births. (Further, when we compare Black Hawk County teen birth rates to Iowa and the Nation, we've experienced even more significant declines. Iowa has experienced a 62% decline in teen births while nationally the rate has declined by 60%.)



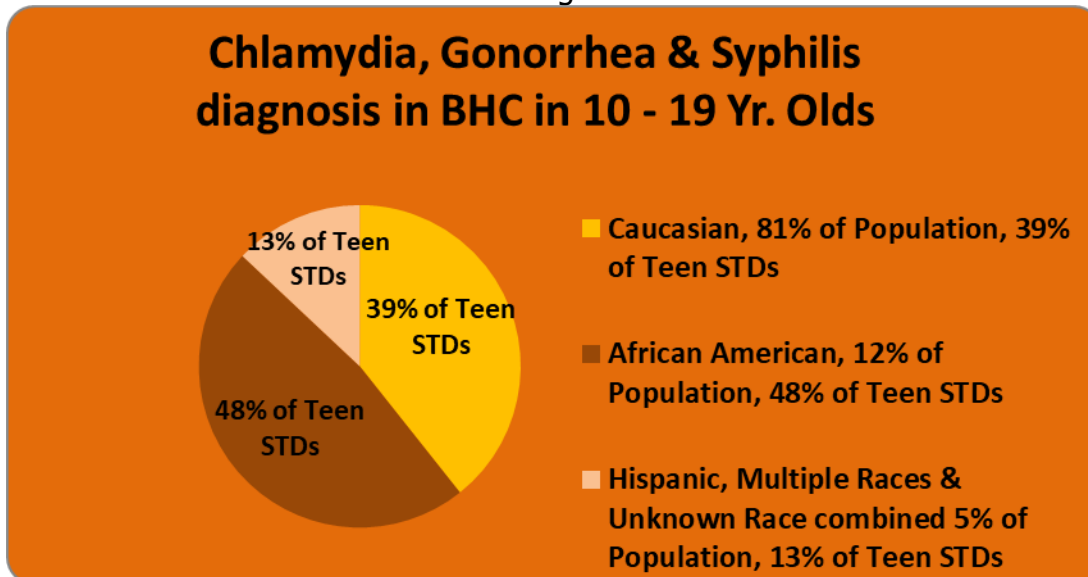
In Fiscal Year 1995, TFY provided 100 Health Education sessions as compared to 1,282 sessions in Fiscal Year 2018. As TFY programming has increased over the years, the number of teen births in Black Hawk County has decreased. We are proud of this correlation and the package of programming we have developed in partnership with our schools and youth serving agencies.



According to the Iowa Department of Public Health (IDPH), the rate of *overall* teen births has been declining. The rate of teen births to youth of color continues to be disproportionate. African Americans (AA) account for 12% of the population in Black Hawk County and yet experienced 37% of the teen births. Beginning in fiscal year 2009 TFY strategically implemented the SiHLE curriculum to address these disparate sexual health outcomes, reaching over 516 AA females between the ages of 14 – 18.



IDPH data shows that Black Hawk County has had the highest per capita rate of reported cases of STDs in the state nearly every year since 2007. There continues to be a disparate rate of these infections among youth of color, as demonstrated below with AA accounting for 48% of these STDs.



**Let's join efforts to continue improving these outcomes.
To get involved, contact Joni Spencer at TFY 319.269.9089.**